

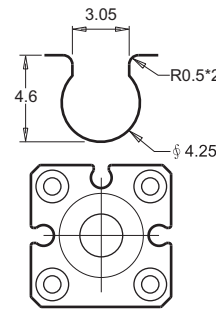


AL-02 Series

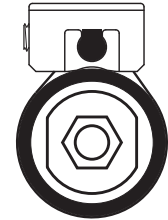


STRONG FIXING METHOD Specifically for Ultra-Short stroke cylinder use

GROOVE DIMENSION (SMC)



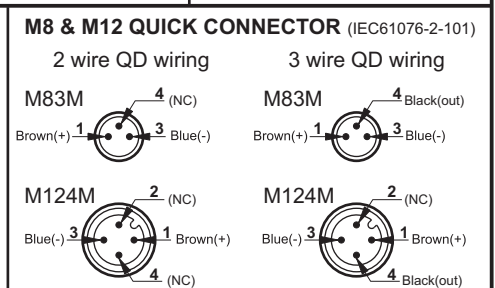
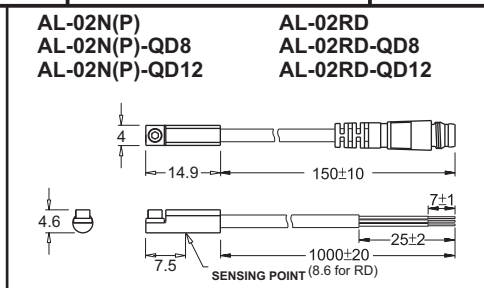
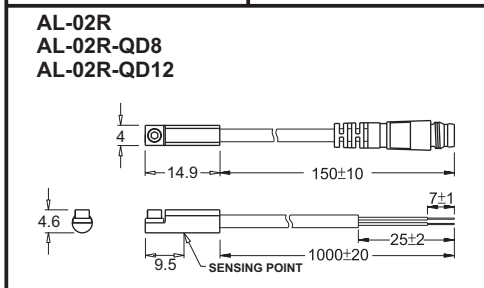
PBE CLAMP



Suitable for 6mm - 63mm Diameter

SPECIFICATION

TYPE	AL - 02R	AL - 02RD	AL - 02N	AL - 02P
CHARACTERISTIC				
SWITCHING LOGIC	SPST Normally Open	SPST Normally Open	Solid State Output, Normally Open	
SENSOR TYPE	Reed Switch	Reed Switch	NPN Current Sinking	PNP Current Sourcing
OPERATING VOLTAGE (NOTE 1)	5~120V DC/AC	5~30V DC	5~30V DC	
SWITCHING CURRENT	100 mA Max.	300 mA Max.	200 mA Max.	
SWITCHING RATING	3.5 W Max.	3.5 W Max.	6 W Max.	
CURRENT CONSUMPTION	—	10 mA Max. @ 24V	15 mA Max. @ 24V	16 mA Max. @ 24V
VOLTAGE DROP	2.5V Max. @ 100mA DC	0.1V Max. @ 500mA DC	0.5 V Max. @ 200 mA DC	
LEAKAGE CURRENT	—	—	0.01 mA Max.	
INDICATOR	Red LED	Dual Yellow LED	Red LED	Green LED
CABLE	2.8 ϕ , 2C, OIL RESISTANT PVC	2.8 ϕ , 3C, OIL RESISTANT PVC	2.8 ϕ , 3C, OIL RESISTANT PVC	
SENSITIVITY (NOTE 2)	55~65 GAUSS	55~65 GAUSS	40~50 GAUSS	
SWITCHING FREQUENCY	1000 Hz	1000 Hz	1000 Hz	
TEMPERATURE RANGE	-10 ~ 70 °C	-10 ~ 70 °C	-10 ~ 70 °C	
SHOCK (NOTE 3)	30 G	30 G	50 G	
VIBRATION (NOTE 4)	9 G	9 G	9 G	
ENCLOSURE CLASSIFICATION	IP 67 (EN60529)	IP 67 (EN60529)	IP 67 (EN60529)	
PROTECTION CIRCUIT	—	—	Power Reverse Polarity; Surge Suppression	
Wiring Diagram				



- NOTE: 1. The max. operating voltage of AL-02R-QD8 is 60V AC/DC (Based on IEC61076-2-101).
 2. Measuring standard target: 15.5 * 8 * 5t(Anisotropic Rubber Magnet).
 3. Sin Wave / X, Y, Z 3 Directions / 3 Times Each Direction / 11mS Each Time.
 4. Double Amplitude 1.5mm / 10Hz~55Hz~10Hz(Sweep 1min) / X, Y, Z 3 Directions / 1Hour Each Time.
 5. All trademarks used in this catalog are the property of their respective owners.
 6. We reserve the right to make changes without notice.

